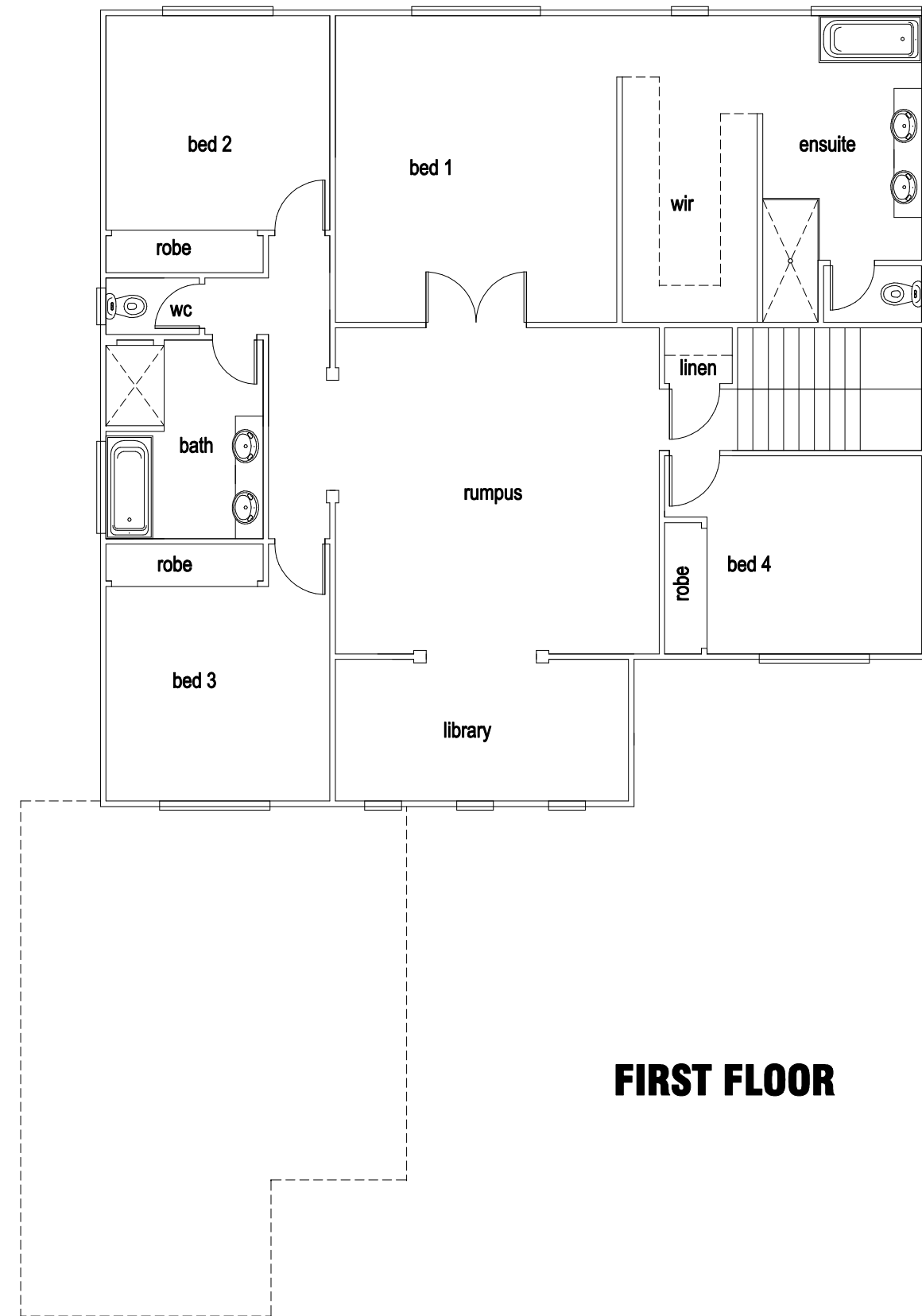


GROUND FLOOR

LEGEND

- ⊙ ceiling mounted light
- ⌒ ankle lights
- ⌒ single general purpose outlet
- ⌒ double general purpose outlet
- ⌒ television point
- ▽ data point
- ▼ telephone point
- ▭ MB meter box
- ⊗ smoke alarm (240V battery backup)
- ⊗ 3 in 1 exhaust fan
- ⌒ fluorescent bar light
- Ⓜ wall light
- ⓓ recessed downlight
- ⓐ adjustable recessed doenlight
- ⓐ air conditioning unit
- ⓐ GAS HWS gas hot water system
- ⓐ switch
- ⓐ two-way switch
- ⓐ switch with dimmer
- ⓐ ceiling fan
- FRIG connection for refrigerator
- DW connection for dishwasher
- WM connection for washing machine
- HWU connection for hot water unit
- WP weatherproof
- CM ceiling mounted double gpo
- HP connection for hot plate & oven (permanently wired)
- RH connection for range hood
- MW connection for microwave

ENERGY EFFICIENT LIGHTING
 FLUORESCENT LIGHTS OR COMPACT FLUORESCENT LIGHTS (CFLs) ARE TO BE USED IN 40% OF THE TOTAL AREA OF ALL ROOMS. AREA MEASURED TO INCLUDE GARAGE.



FIRST FLOOR