

WATER SAVINGS

WATER SAVINGS TARGET TO BE REACHED IN ACCORDANCE WITH PART 25 OF THE QDC

1. PROVIDE WATER TANK/S WITH A MINIMUM 5000L CAPACITY
2. TANKS TO RECEIVE RAINFALL FROM AT LEAST ONE HALF OF THE ROOF CATCHMENT AREA OR 100m², WHICHEVER IS THE LESSER.
3. RAINWATER TANKS ARE TO SUPPLY WATER FOR EXTERNAL USE AND INTERNAL USE TO TOILET CISTERNS AND WASHING MACHINE COLD WATER TAPS.
4. TANKS TO HAVE:
 - a) SCREENED DOWNPIPE RAINHEAD HAVING SCREEN MESH 4-6mm DESIGN TO SHED LEAVES;
 - b) A MINIMUM OF 15L FIRST FLUSH OF ROOF CATCHMENT DIVERTED/DISCARDED BEFORE ENTERING THE TANK;
 - c) MOSQUITO-PROOF SCREENS OF BRASS, COPPER, ALUMINIUM, OR STAINLESS STEEL GAUZE NOT COARSER THAN 1mm APERTURE;
 - d) FLAP VALVES AT EVERY OPENING;
 - e) A VERMIN TRAP.
5. TANKS MUST PROVIDE A CONTINUOUS SUPPLY BY:
 - a) AN AUTOMATIC SWITCHING DEVICE PROVIDING SUPPLEMENTARY WATER FROM THE RETICULATED TOWN SUPPLY, OR;
 - b) A TRICKLE TOP UP SYSTEM FROM THE RETICULATED TOWN SUPPLY AT A MINIMUM FLOW OF 2L/MINUTE AND A MAXIMUM FLOW RATE OF 4L/MINUTE.
 - c) A MINIMUM STORAGE VOLUME OF THE RETICULATED TOWN WATER SUPPLY TOP UP NOT EXCEEDING 1000L
6. A BACKFLOW PREVENTION DEVICE IS TO BE CONNECTED TO THE STORMWATER SYSTEM IN ACCORDANCE WITH LOCAL GOVERNMENT REQUIREMENTS.
7. IF ROOFWATER IS PUMPED TO A RAINWATER TANK VIA A SEALED DOWNPIPE:
 - a) A SYSTEM TO BLEED WATER FROM THE DOWNPIPE INTO THE APPROVED OVERFLOW SYSTEM MUST BE PROVIDED TO PREVENT STAGNANT WATER FROM BEING HELD IN THE DOWNPIPE
 - b) AN INSPECTION OPENING MUST BE PROVIDED FOR MAINTENANCE AND CLEANING
8. MATERIALS USED IN THE RAINWATER TANKS MUST COMPLY WITH THE ACCEPTABLE SOLUTIONS OF THE QUEENSLAND DEVELOPMENT CODE

ROOF CATCHMENT AREA = 147.8m²

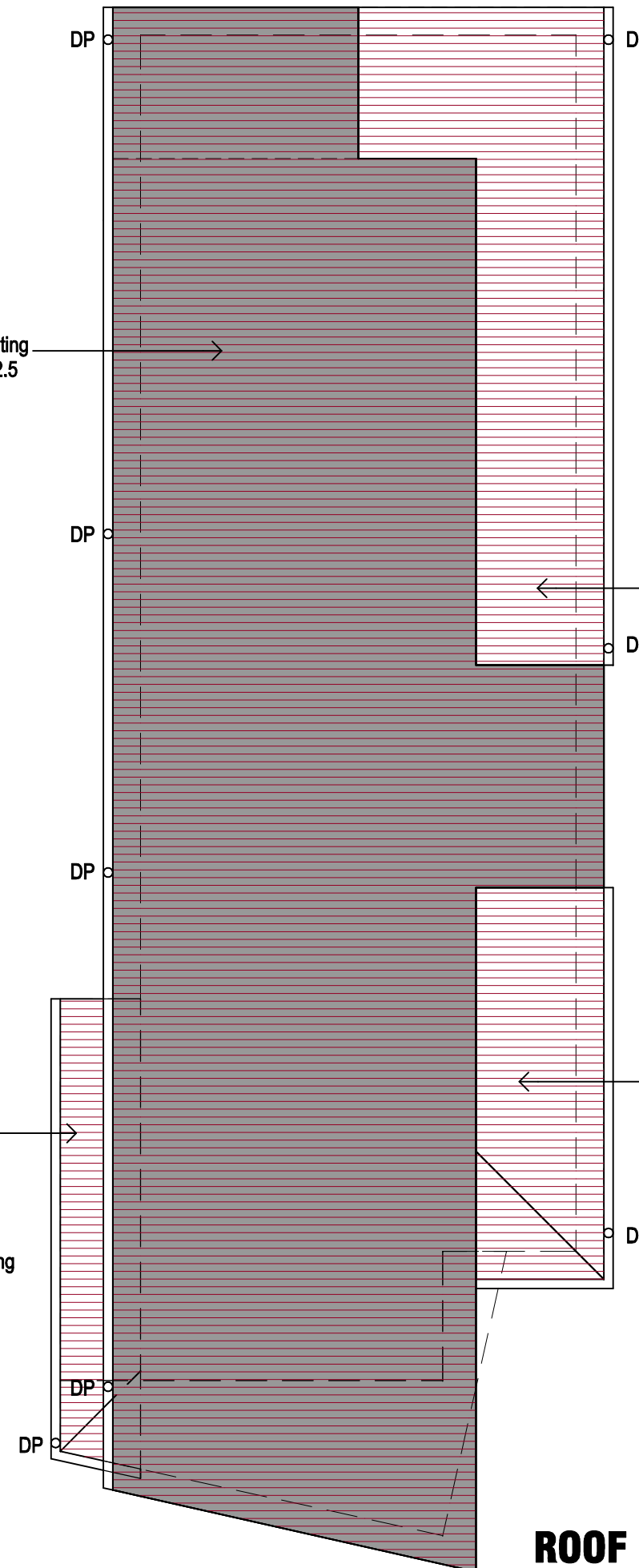


corrugated colourbond roof sheeting at 12.5° pitch. insulate roof to R2.5

corrugated colourbond roof sheeting at 12.5° pitch. insulate roof to R2.5

corrugated colourbond roof sheeting at 25° pitch. insulate roof to R2.5

corrugated colourbond roof sheeting at 15° pitch. insulate roof to R2.5



ROOF PLAN