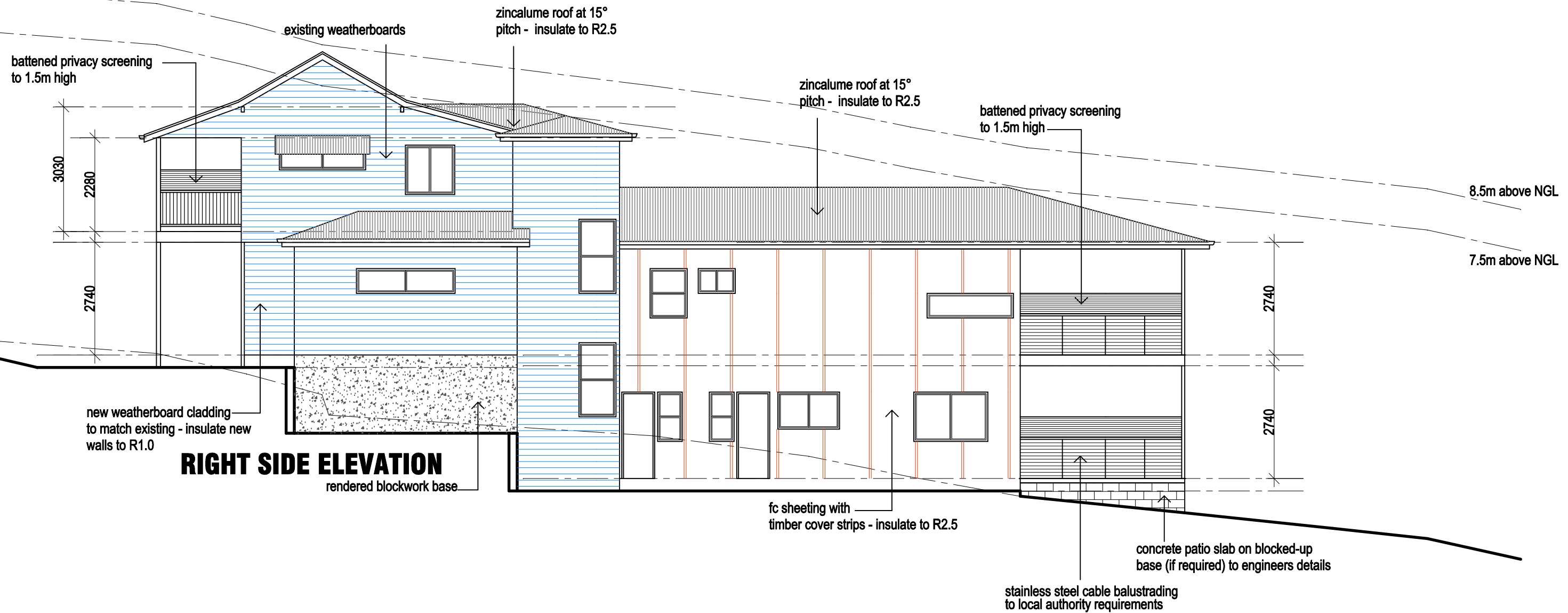


raise 2200mm



RIGHT SIDE ELEVATION

rendered blockwork base

new weatherboard cladding to match existing - insulate new walls to R1.0

fc sheeting with timber cover strips - insulate to R2.5

concrete patio slab on blocked-up base (if required) to engineers details

stainless steel cable balustrading to local authority requirements

8.5m above NGL

7.5m above NGL