

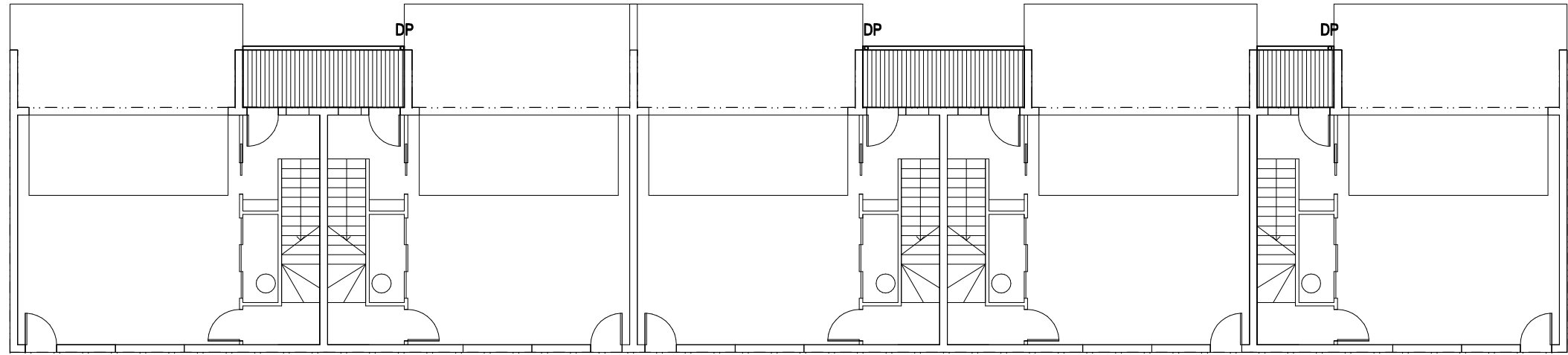
Main Roof:

Trimdeck roof sheeting at 3° pitch
150x45 Rafters at 900mm centres
Pitching beams to engineers details
insulate to R2.5

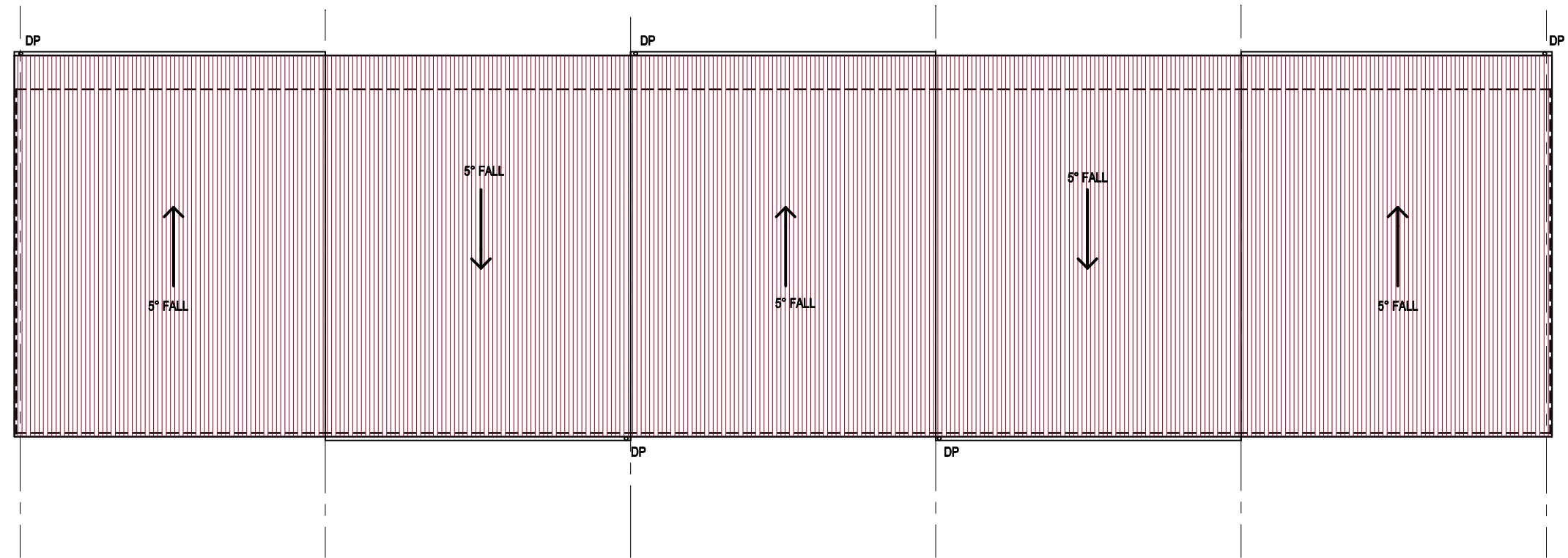
Balcony and Entry Roofs:

Trimdeck roof sheeting at 5° pitch
130x45 Rafters at 900mm centres
Pitching beams to engineers details

Entry roof to have insulation to R2.5



GROUND FLOOR ROOF PLAN



SECOND FLOOR ROOF PLAN